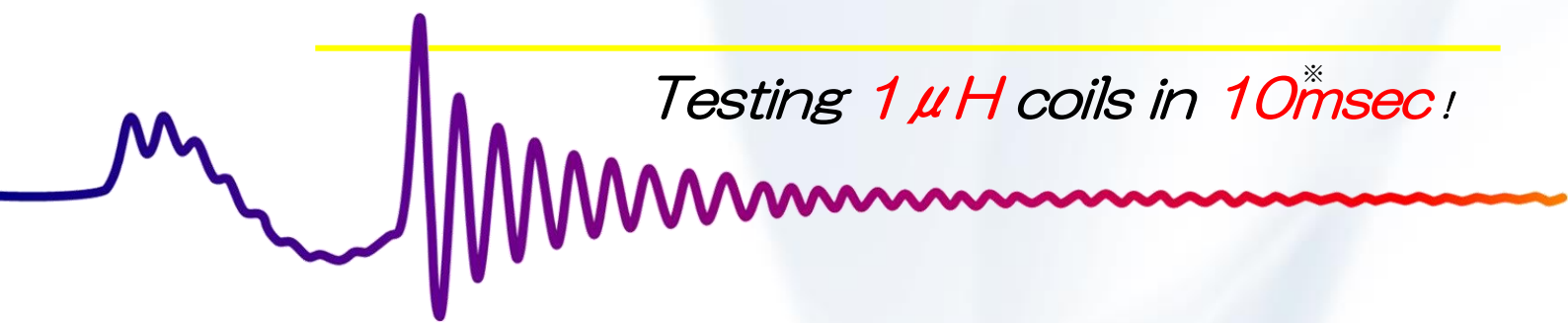


Ultra Low Inductance Coil · High Speed Test Specification !



Testing 1 μ H coils in 10^{}msec !*

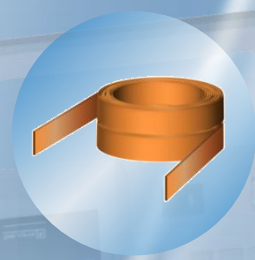
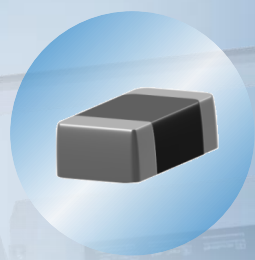
DWX-LI Series

NEW

- DWX-100LI
- DWX-300LI
- DWX-01LI
- DWX-100LI2
- DWX-300LI2



4 terminal test Terminal



For evaluation test It can be used for detailed evaluation test of coil parts.
For high speed test It operates at an application time of 4msec and a test interval of 10 msec.
※ (Pulse impression 1 pulse · without judgment · Fastest time without screen display)

Patent pending

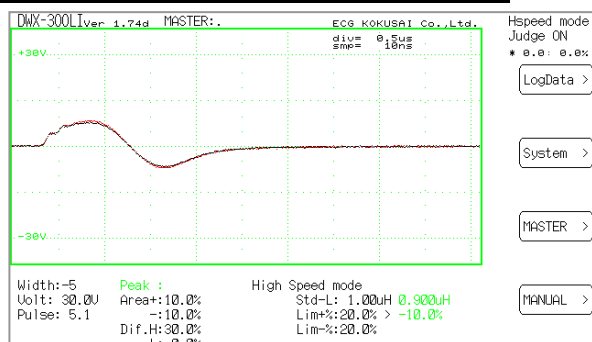
Features

- The model is specialized in insulation test of chip power inductor coil.
- 4 terminal test circuits can be performed sufficiently with applied high voltage to ultra-low inductance coil.
Maximum 1000 V (screen display value) can be applied to a coil of minimum 1 μ H.
- Due to 2 times waveform sampling resolution of conventional testing machine, detailed response waveform is displayed.
For ideal in-coil insulation test, high-speed inspection equipment for high-speed operation of good / defective judgment "Test mode", and "Breakdown test mode" for detailed evaluation are built in one unit.
- With 1 pulse application without judgment, high speed operation can be performed with shortest test time of 10 msec, and it can be used in mass production line.
- Besides chip power inductors, it also supports choke coils, motor coils, coils with few windings.

Specification

	DWX-100LI / LI2	DWX-300LI / LI2	DWX-01LI
Usage	High speed L judgment	Precision test	Low inductance · High voltage
Inductance range	0.1 μ H ~ 10mH	0.1 μ H ~ 10mH	0.1 μ H ~ 10mH
Maximum output voltage (no load)	1 ~ 100V	3 ~ 300V	10 ~ 1200V
Measured voltage resolution	0.1V	0.3V	1.2V
Maximum applied voltage (approx.)	1 μ H during 100V	1 μ H during 300V	1 μ H during 1000V
Waveform sampling resolution	Equivalent to 200MHz		
Minimum test time (1 pulse applied)	· High speed mode No judgment: 10msec With judgment: 18msec ※ When there is L judgment 10 msec will be added · Tester mode No display: 53msec With display : 108msec		
Judgment function	Area (Area%)、 waveform (Dif Area%) Peak voltage (Peak Stb%) Discharge level (Laplacian)、 Waveform attenuation rate (Laplacian%) Breakdown voltage evaluation test (BDV) Manual pressure resistance evaluation (Manual BDV)		
Test circuit	4 terminals		
Test cable length range	Recommended 1.5m (maximum 3m)		
Additional function	Number of master waveform memory 196 models, External control by extended RS-232C, I/O and CF memory card, test results Log saving , screen hard copy preservation.		
External I/O Control signal	Impression trigger (Trig) · Application termination (Index) etc. High-speed interface timing support for inspection handlers		
Appearance dimension	345(W)×185(H)×360(D)		
Accessories	4 terminals test cables 1.5m		
Power supply voltage	AC100/115/220/240 \pm 5% Changeable		
LI2 dedicated function			
L judgment function	\pm % L with reference L value judgment range: 0.24 μ H ~ 5 μ H		
Voltage compensation function	Automatic correction of error of applied voltage caused by deviation of L value		

L Judgment function screen



L judgment pulse waveform

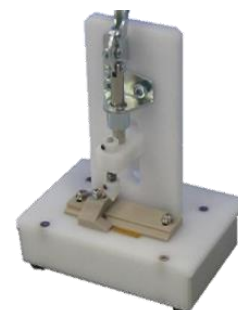
[NOTICE]

■ Specifications · Design may be changed without notice due to reasons such as improvement. ■ For the convenience of printing, there may be a difference in color and texture etc. In the actual product with the photograph described in the catalog ■ I will make an effort to describe accurate information about the contents of this catalog, but if there should be any mistakes, etc. noticed points, please inform our sales department.

Option



DWX-01LI-0P1



DWX-01LI-0P2

ECG-KOKUSAI CO., LTD. 〒205-0023 HAMURA SHI SHINMEIDAI 3-33-6 TOKYO TEL:+81-42-554-5383 FAX:+81-42-555-7380

CHINA/SHANGHAI ELECTRONICS CO., LTD. ROOM 101, #1 LANE 368, HONG JING ROAD, 201103 TEL:021-54583311 FAX:021-64024357