

Device Programmer for eMMC Devices

AF9750

Quick & Flexible

Offers high speed processing using 200MHzDDR interface, for ver 5.0 or newer eMMC devices

New AF9750

High speed programming

For ver. 5.0 or newer eMMCs meeting JEDEC HS400, AF9750 with 200MHzDDR interface offers about 4 times faster programming than previous models.

64GB (P+V) | Approx. 1,330 sec Approx. 21 sec/GB

* Depends on devices.

Data transfer

High speed transfer of high density data is possible by using USB3.0.

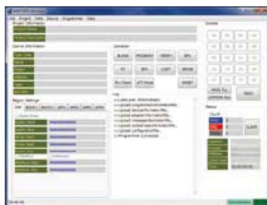
1GB data transfer (PC→AF9750) | Approx. 13 sec

* Depends on PC specifications.



Standard buffer memory
1 Tbit devices
Max. 20

Application for eMMC devices



AF9750 is provided with control software using UI specialized for programming eMMC devices. The latest software for updating hardware and device information will be provided for free on our website.

- USER area can be split into four parts with GPP function
- "Enhanced" configuration can be applied
- Various register settings are supported
- Programming settings can be saved and read as a project file
- Quantity control by using the lot mode

Interfaces appropriate for manufacturing sites

Equipped with USB 2.0/3.0, LAN and RS232C, AF9750 can be linked with other production equipment and control devices.



Embedding AF9750 in an automated system

Long-hour unmanned programming can be performed by embedding AF9750 in an automated system. Image processing using a camera for device position correction enables device transportation with no stress on device balls. We can also offer systems with laser marking and 3D lead inspection functions.



Options

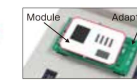
● Conversion adapter

Our conversion adapters support eMMC packages of various manufacturers. We can also produce custom adapters for programming to eMMCs that have already embedded.

Model	Package
TN01-153BG-01	153BGA 11.5×13×0.8 to 1.2(mm)
TN01-100BG-02	100BGA 14×18×1.2 to 1.4(mm)



TN01-153BG-01



Example of an eMMC module + adapter

● Socket opening/closing tool

As lead-free memories with larger capacities become widespread, many sockets have been tight and hard to open/close. Opening/closing tools will reduce burden on workers and increase operation efficiency.

Requests for machine demonstrations and inquiries

MAIL : AF9750@j-fsg.co.jp

Product specifications

	AF9750
Supported devices	Ver. 5.0 or newer eMMC devices of various manufacturers
Buffer memory	1Tbit (128GB) as a standard, optional expansion available
Concurrent programming/No. of slots	Up to 20 devices / 20 slots
Device functions	COPY · ERASE · BLANK · PROGRAM · VERIFY · B.P.V · E.P.V · P.V
Programming power	Vcc: +3.3V, Max: 1A/slot Vccq: +1.8V, Max: 500mA/slot
External interfaces	USB 2.0/3.0, RS232C, LAN
Input power voltage	AC100 to 240V
Frequency range	50 to 60Hz
Power consumption	Up to 300VA
Size/weight	W223 x D290 x H108mm (excluding protrusions)/approx. 3.5kg
Consideration for environment	Compliant with RoHS